



AASHISH



JOSHI
BUILDCON
LANDMARKS

CELEBRATING
42
YEARS OF EXCELLENCE

RE FRESH
INVENT
DEVELOP
Good things always evolve for the greater good



OVERVIEW

KOTHRUD'S WARMEST WELCOME TO PREMIUM LIVING.

Nestled in the vibrant heart of Kothrud, Aashish offers thoughtfully designed 2 & 3 BHK homes where elegance, space, and comfort blend effortlessly.

Experience modern living wrapped in timeless charm, with spacious layouts, branded specifications, and carefully curated amenities – all in a location that connects you to the very best of Pune.

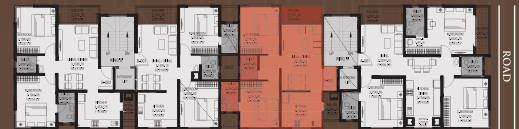
With transparent transactions and a legacy of trust, Aashish isn't just about buying a home – it's about belonging to a landmark in the making.







3 BHK : TOTAL CARPET : 1023 SQ.FT.



2 BHK : TOTAL CARPET : 730 SQ.FT.



2 BHK : TOTAL CARPET : 677 SQ.FT.



2 BHK : TOTAL CARPET : 737 SQ.FT.

SPECIFICATIONS

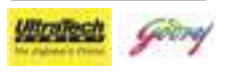
Framed Structure:

- RCC framed earthquake resistant structure
- Floor-to-floor height of 3 meters.

Walls:

- Quality AAC blocks for all walls

Esteemed brands associated with us:



Plaster/Finish:

- Sadaf brand POP finish for ceilings & walls after plaster to all walls internally
- **External walls:** Double-coat, sand-faced textured plaster.

Painting:

- Internal: Water-based Luster Paint
- External: Apex cement paint with 4-coat aquatech system.

Esteemed brands associated with us:



Flooring & Dado Work:

- All the rooms will be provided with branded 800 X 800 mm or 1200x600mm sized Premium Vitrified tiles
- The bathrooms will have Designer Glazed Tile Dado upto ceiling level and flooring will be of 12"x12" anti skid ceramic tiles

Esteemed brands associated with us:



Bathrooms:

- Equipped with hot and cold water mixing arrangement, shower, and Grade "A" concealed plumbing.
- Each bathroom includes an exhaust fan.
- Fittings from premium brands like Jaguar / Cera, with push-valve and health faucet.
- Sanitary ware by Cera / Jaguar / Hindware.

Esteemed brands associated with us:



Kitchen:

- Black Granite countertop (10-12 feet long) with a Stainless Steel sink by Nirali or Franke (20 gauge).
- Glazed tile dado up to lintel level above the counter as well as below the counter
- Features a separate dry area and an exhaust fan by Usha or Havells.

Esteemed brands associated with us:



Solar Water Connection:

- Solar water connection in every bathroom.
- Electric PV Solar Panels for common area lighting.

Water Proofing:

- Brick bat coba waterproofing for toilets and terraces.
- Includes a 5-year guarantee for leak-proof performance.

Door Locks & Security:

- Doors equipped with Godrej or Europa night latch, lock system
- Comprehensive CCTV security system across the project.
- Smart Access Control System at parking level
- Each flat features a safety entrance door and a Video Door Phone by Godrej / Hikvision / Zicom.

Esteemed brands associated with us:





Windows:

- Type: Aluminum powder-coated sliding windows of Jindal brand
- Glass: Saint Gobain or Asahi.
- Features: Safety grills, stone jambs (marble, granite, Jaisalmer stone), and SS mosquito mesh track.

Esteemed brands associated with us:



Water Supply:

- Tanks: Syntex for potable water; underground RCC for utility.
- Pumps: Dual pump system for efficient water transfer.
- Automation: Automatic water level controllers.
- Borewell: Minimum one per project with dedicated pump.

Lift :

Lift of SS finish with generator / battery back up.

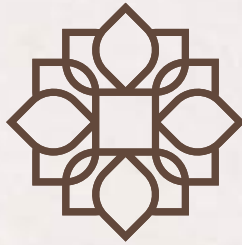
Esteemed brands associated with us:



Other Common Amenities:

Elegant Entrance Lobby | Attractive Compound | Fire Fighting System
Rain Water Harvesting | Rooftop Garden | Society Office

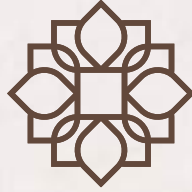




AASHISH



WELCOME TO KOTHRUD'S
MOST GRACIOUS LANDMARK



AASHISH

2 & 3 BHK PREMIUM HOMES

Address : Aashish, Near Rahul Nagar,
Kothrud, Pune 411038



4 & 5, Parvati Darshan Apts, 759/44, Near Chitale Bandhu,
Opp. Deccan Gymkhana, Pune - 411004

+91 70660 42620 / 21
sales@jblandmarks.com / www.jblandmarks.com

FOR REDEVELOPMENT

+91 70660 42618 | redevelopment@jblandmarks.com

Disclaimer : This brochure depicts an imaginary concept. The information contained in the brochure and related inserts are indicative. The developer reserve right to modify or cancel any plan or amenity without any notice.



MAHA RERA NO. P52100080289
maharera.maharashtra.gov.in