



Geetanjali-B

2, 3 & 4 BHK PREMIUM HOMES

PROJECT BY



ENTERING

40TH

Year of Excellence

It's not just about building structures or spaces, it's about the journey that cements a bond with our customers, for a lifetime! We, at **Joshi Buildcon Landmarks**, persistently endeavour to offer you with not just spaces or homes, but building landmarks that create a journey of memories and experiences to cherish for!

We, at **Joshi Buildcon Landmarks**, always keep 'quality' at paramount elevation, providing industry leading architectural expertise and top-notch structural execution, to present our customers with value-adding spaces and best-in-class features.



RE FRESH INVENT DEVELOP

Good things always evolve for the greater good

Change is the only 'constant'!

With these changing times and lifestyles, people are inclined towards homes that live up to the transformation. We, at **Joshi Buildcon Landmarks**, ascertain these modern day essentials and provide redevelopment solutions with the needed expertise and guidance for specific demands. We have crowned various such redevelopment projects in some of the oldest and most popular locations of Pune. With an initiated redevelopment of some of the oldest addresses at Pune's most popular locations.

We have an **In-House Architectural & Project Management Division** to our credit that provides a holistic approach to the business requirements and expertises in redevelopment designs. The owners of the firm have core competency in technical and architectural design, providing an edge for the execution of projects and cultivating enhanced utilisation of spaces!



Overview

Nestled in the serene and pleasant surroundings of **Sahakarnagar**, '**Geetanjali**' excels in providing a location with the best of city life and a sublime touch of nature and greenery, giving an absolute blissful living experience! A very aptly designed site, it blossoms through the favourable ambience of the beautiful '**Taljai Tekdi**', with a perfect blend of the urban culture and a convenient access to **Satara Road, Swargate, Market Yard & Deccan**.

Located in the much sought after, **Tulshibaugwale Colony**, it provides you with a very strategic exposure to daily necessities, luxuries and natural elements! It is also well connected to premier education institutions like **PVG's Engineering College and Muktangnan School**, giving an added advantage to residents! Generous abodes, provisioned with premier furnishings and airy rooms, this is an ideal choice for a home to be!

Enjoy state-of-the-art amenities, optimum utilisation of space and skilled engineering, furnished with latest technology trends in place, giving you a true living paradise!





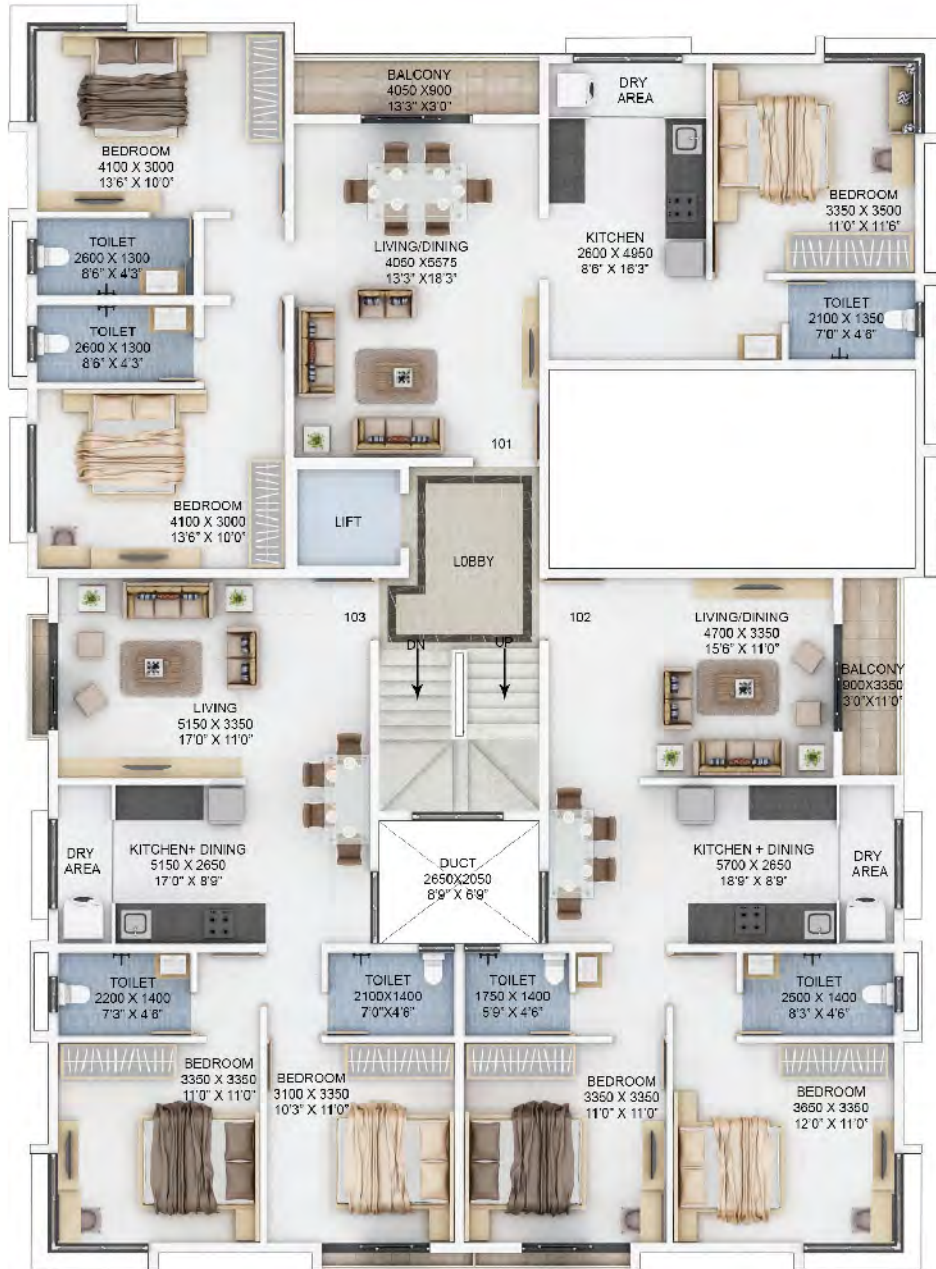
Specifications

- Earthquake resistant RCC frame structure
- Anti-Termite treatment at foundation level
- Gypsum (POP) finish for all walls & ceilings done after single-coat plaster
- Internal and external painting with Asian / Nerolac Paints
- Branded 600×600 double-charged nano finish Vitrified tiles (Kajaria / Asian / Nitco or equivalent)
- Designer dodos in kitchen and toilets
- Bathroom & Sanitary-ware of Jaguar / Cera / Hindware
- Granite kitchen platform with Nirali Sink
- Water proofing guarantee for 5 years
- Laminate finish attractive main door with Godrej/ Europa locking system
- All bedrooms provided with lofts of adequate size
- M.S. safety entrance door & Video Door Phone (Honeywell or equivalent)
- S.S finish elevator with auto rescue device (Schindler / Kone / Johnson or equivalent)
- Powder coated sliding glass windows of Jindal make with S.S mosquito-mesh panel
- Concealed copper wiring (Finolex/ Polycab) with branded-switches like- Legrand/ Anchor/ Crabtree or equivalent
- Copper conduit network for piped gas connection as per MNGL norms





FIRST FLOOR

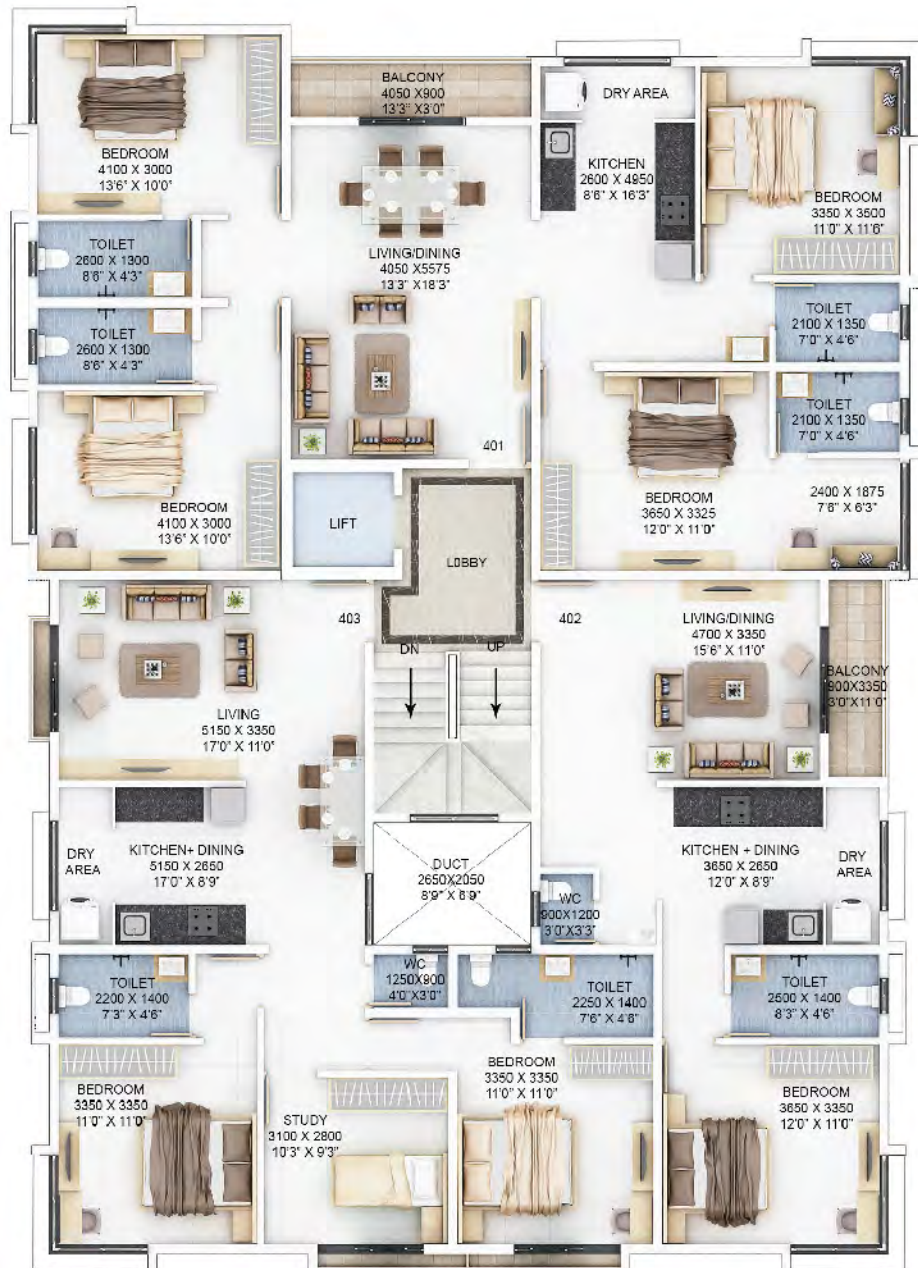


ROAD





FOURTH FLOOR

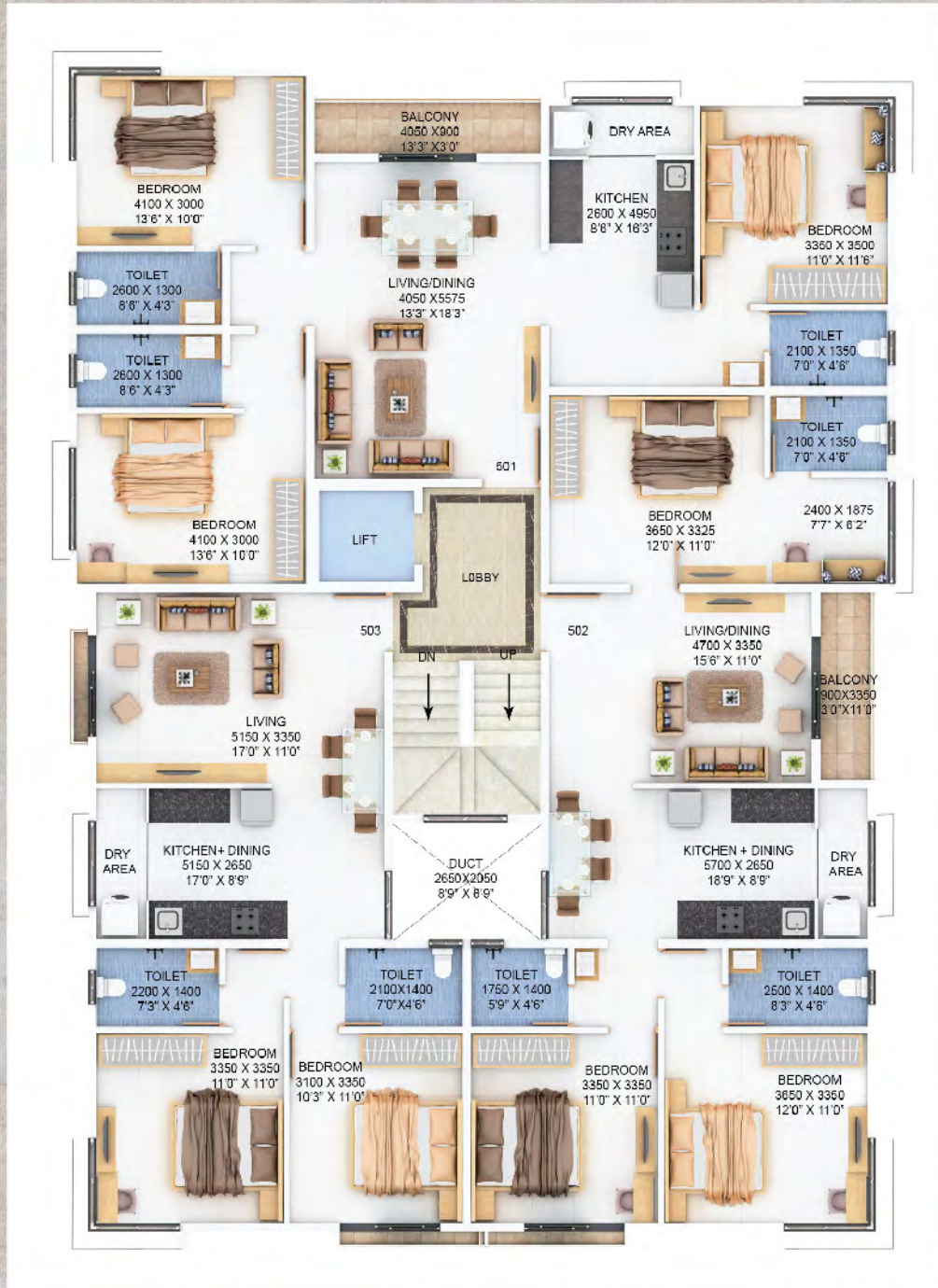


ROAD





FIFTH FLOOR

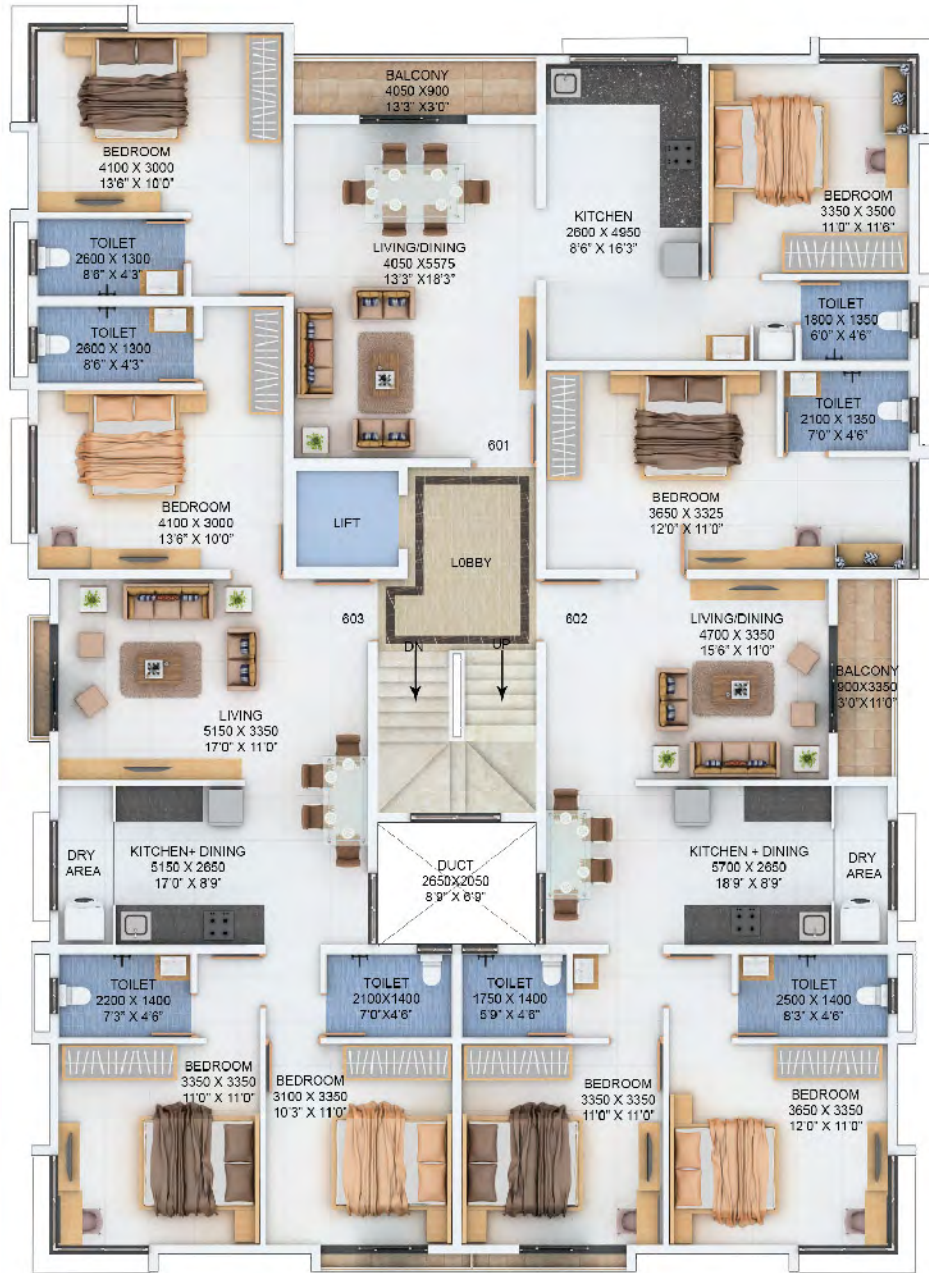


ROAD





SIXTH FLOOR

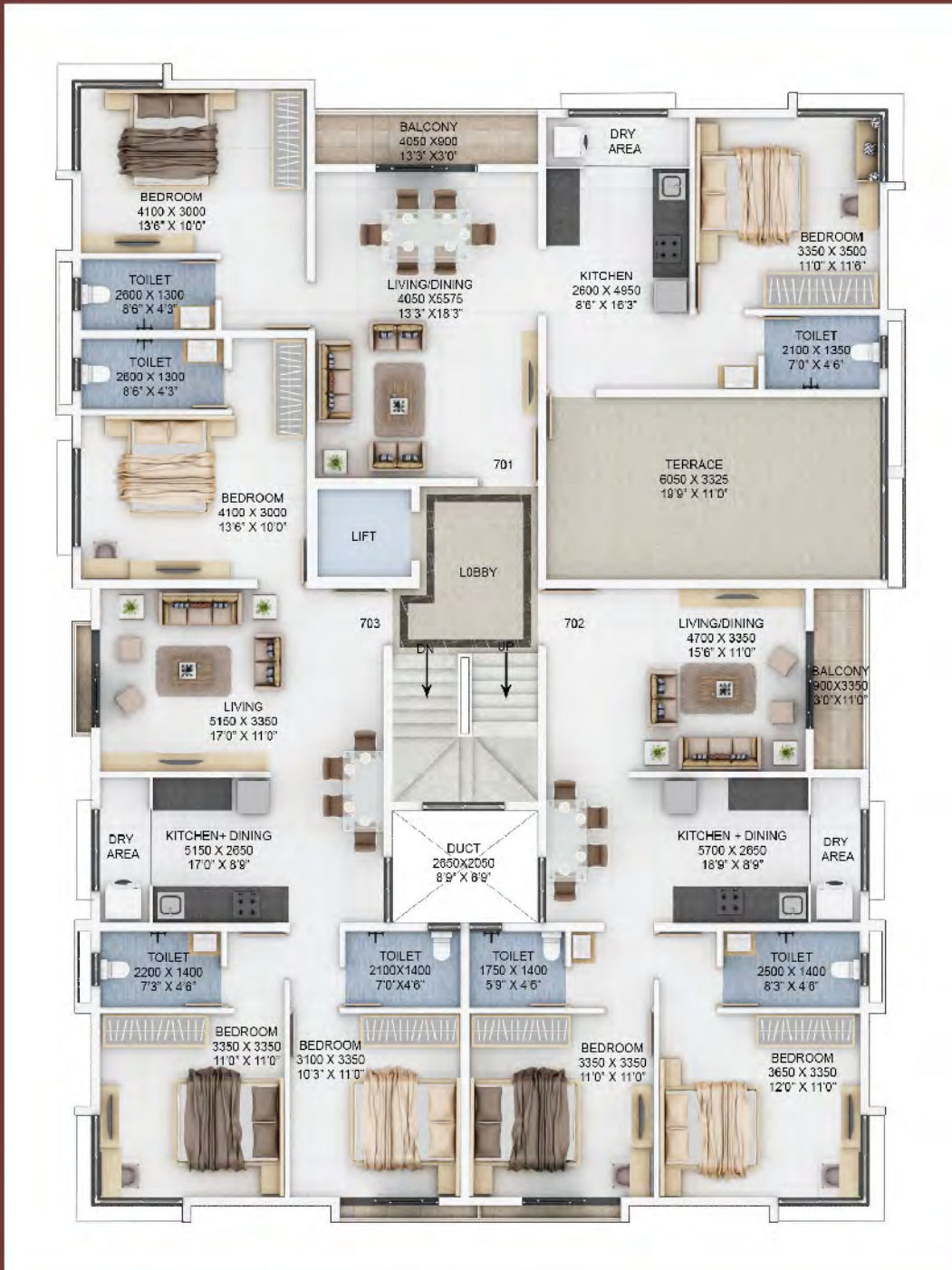


ROAD





SEVENTH FLOOR



ROAD



3 BHK



2 BHK



AREA STATEMENT

TYPE	PLANNED CARPET (SQ.FT.)
3 BHK	1020
2 BHK	754



4 BHK



3 BHK



AREA STATEMENT

TYPE	PLANNED CARPET (SQ.FT.)
4 BHK	1249
3 BHK	978

3 BHK



AREA STATEMENT

TYPE	PLANNED CARPET
3 BHK	890

“Simplicity is the ultimate form of sophistication”

Leonardo Da Vinci





Geetanjali-B

2, 3 & 4 BHK PREMIUM HOMES



MAHA RERA NO. P52100034370

Address : CTS No. 1289, Plot No. 115, Tulshibaugwale Colony,
Opp Dashabhuj Ganapati Mandir, Sahakarnagar



4 & 5, Parvati Darshan Apts, 759/44, Near Chitale
Bandhu, Opp. Deccan Gymkhana, Pune - 411004

+91 70660 42620 / 21

info@jblandmarks.com / www.jblandmarks.com

Disclaimer : This brochure depicts an imaginary concept. The information contained in the brochure and related inserts are indicative. The developer reserve right to modify or cancel any plan or amenity without any notice.